

# Congo Basin Forest Partnership

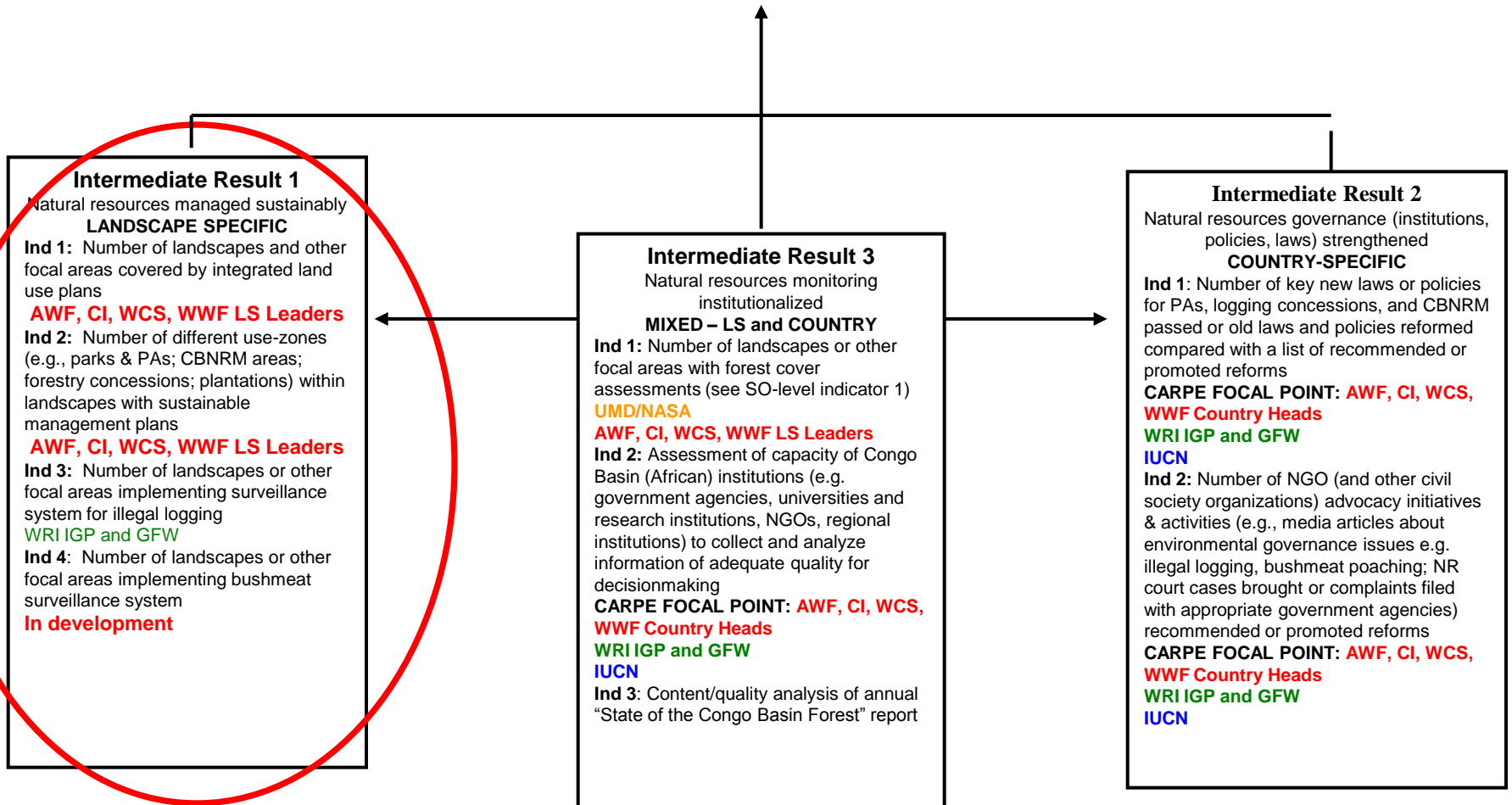
Consultative Committee

Kinshasa, September 27, 2010

## Progress and Results 2003-10



# Reduce the Rate of Forest Degradation and Loss of Biodiversity

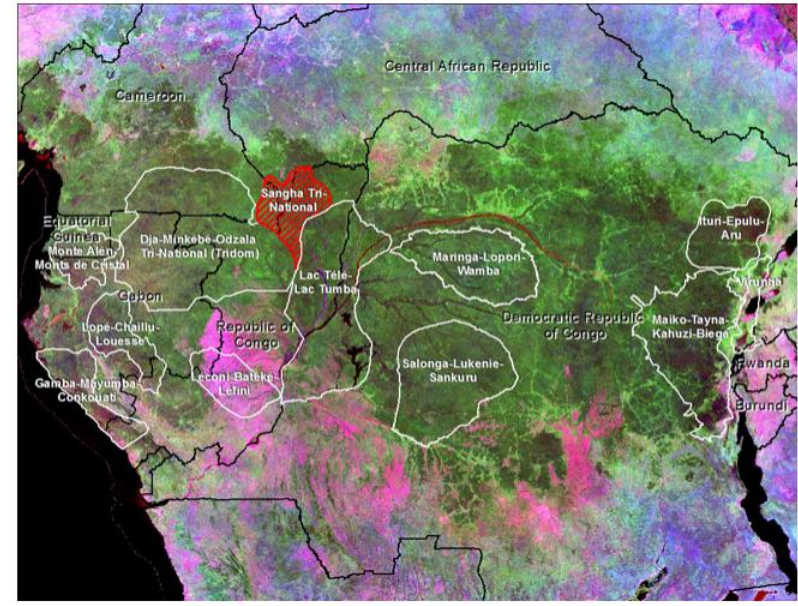




# CARPE Information Management Tool

- Landscapes
  - ↳ Monte Alen-Mont de Cristal
  - ↳ Gamba-Mayumba-Conkouati
  - ↳ Lope-Challu-Louesse
  - ↳ Dja-Odzala-Minkebe (Tridom)
  - ↳ Sangha Tri-National (TNS)
  - ↳ Leconi-Bateke-Lefini
  - ↳ Lac Tele-Lac Tumba
  - ↳ Salonga-Lukenie-Sankuru
  - ↳ Maringa-Lopori-Wamba
  - ↳ Maiko-Tayna-Kahuzi-Biega
  - ↳ Ituri-Epulu-Aru
  - ↳ Virunga
- Macrozones

Select a Landscape by clicking on the image below or the list to the left



Landscape : Sangha Tri-National (TNS)

- Consortium Team
- Data Collection
- Public Participation
- Land Use Planning
- Activity Budget
- Macrozones

### Consortium Team

**Consortium Lead Organization:** World Wildlife Fund

**Consortium Members:** Wildlife Conservation Society World Wildlife Fund

**Landscape Leader:** Lenoard Usongo [lusongo@wwfcarpo.org](mailto:lusongo@wwfcarpo.org)



CARPE is an initiative of USAID. This website is hosted by University of Maryland.  
 The information provided on this Web site is not official U.S. Government information and does not represent the views or positions of the U.S. Agency for International Development or the U.S. Government.  
[Contact Us](#) | [CARPE Home](#)



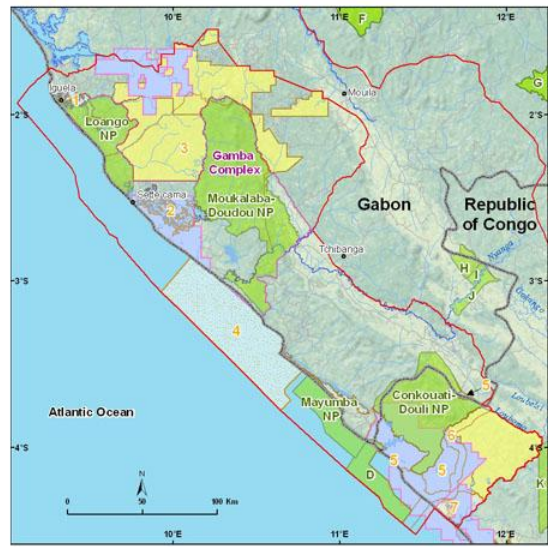
# CARPE Information Management Tool

## Landscapes

### Macrozones

- **Gamba Complex of PAs, incl Loango and Mouk. NPs**
- Loango NP
- Moukalaba Doudou NP
- Mayumba NP
- Ndogo Lagoon CBNRM
- Communities on periphery of Mayumba NP
- Iguela Lagoon
- Shell Gabon Oil & Gas Exploration
- CBG Logging Concession
- Ndogo Department
- Conkouati Douli NP
- Conkouati Douli Community Reserve
- Madingo-Kayes Community zones around CD NP
- Logging Concessions
- Forest Plantations
- Oil & Gas exploration

Select a macrozone from the list to the left



**Landscape:** Gamba-Mayumba-Conkouati

**Macrozone:** Gamba Complex of PAs, incl Loango and Mouk. NPs

- Data Collection
- Public Participation
- Land Use Planning
- Back to Landscapes

## Land Use Planning

### Land Use Planning Status

Convened (%):

Designed (%):

Adopted (%): 25.0

Implemented (%):

### Land Use Planning Documents

#### Strategy Document

- [WWF 2007 SMP Strategy](#)
- [WWF 2007 PA Current Status and Proposed Configuration](#)

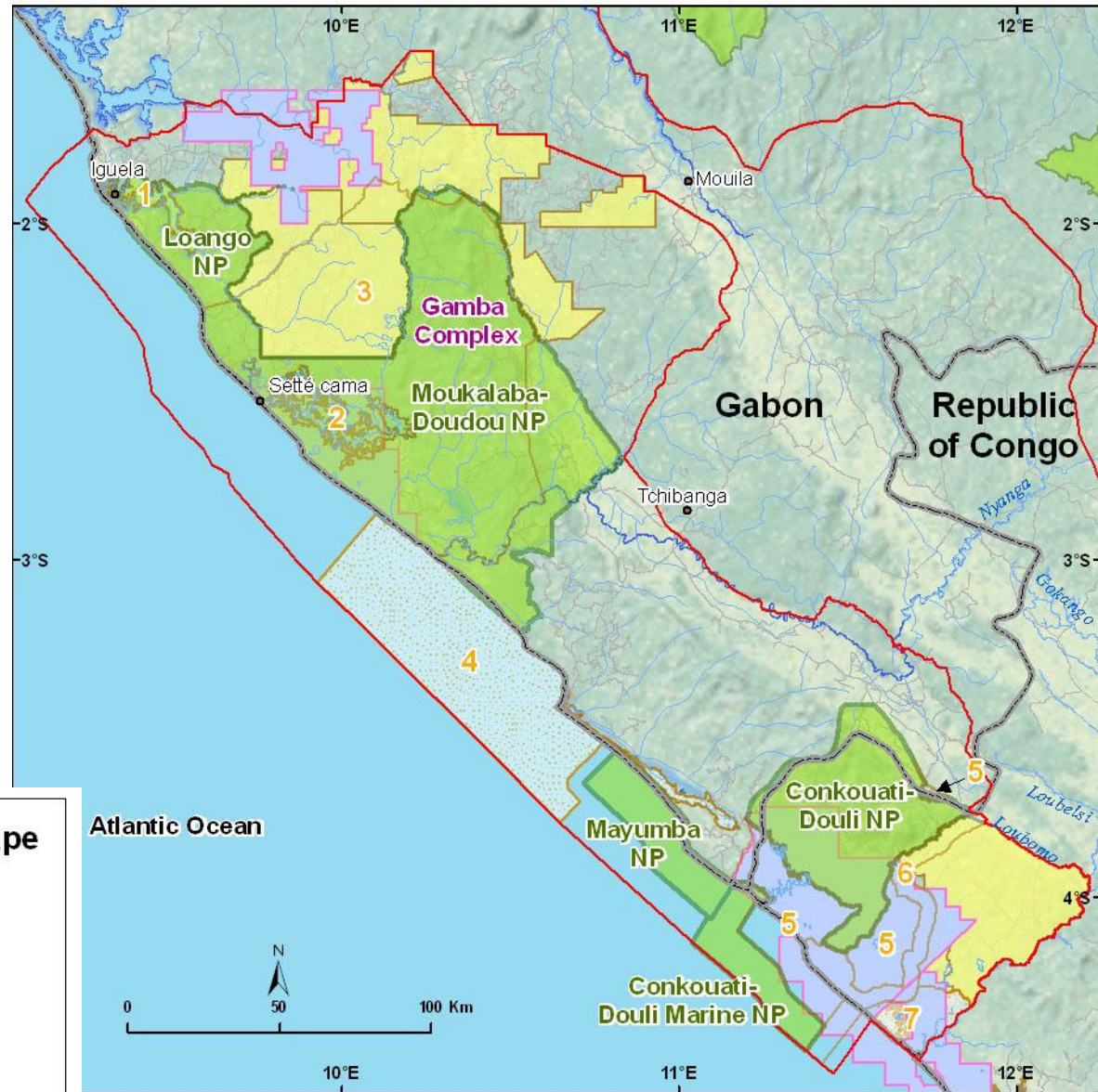
#### Management Plan

No Documents Available

#### Macrozone Maps

- [WWF 2007 Cybertracter Mapping Results](#)

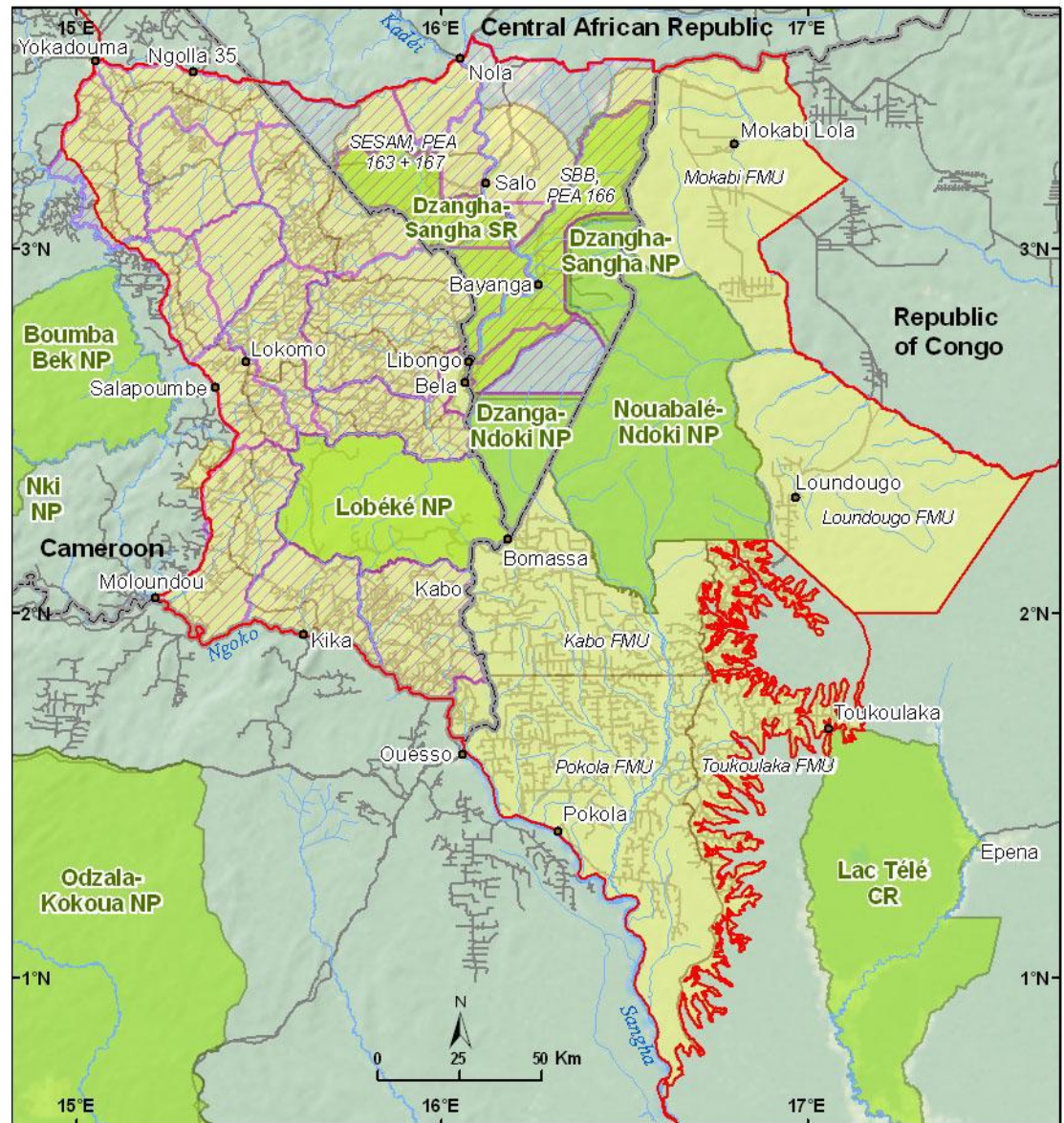
# Macrozones in Gamba-Mayumba- Conkouati Landscape





## LS 2: Gamba-Mayumba-Conkouati Landscape

-  Protected Areas
-  1. Iguela lagoon CBNRM
-  2. Ndougou lagoon CBNRM
-  3. Ndougou Department CBNRM
-  4. Community fisheries zone
-  5. Ecodevelopment zone
-  6. 5 km buffer zone
-  7. Madingo CBNRM
-  Petroleum ERZ
-  Logging Concessions

# Macrozones in Sangha Tri National Landscape



## LS5: Sangha Tri-National Landscape

-  Hunting Concession
-  Logging Concession

# LANDSCAPES Total Area

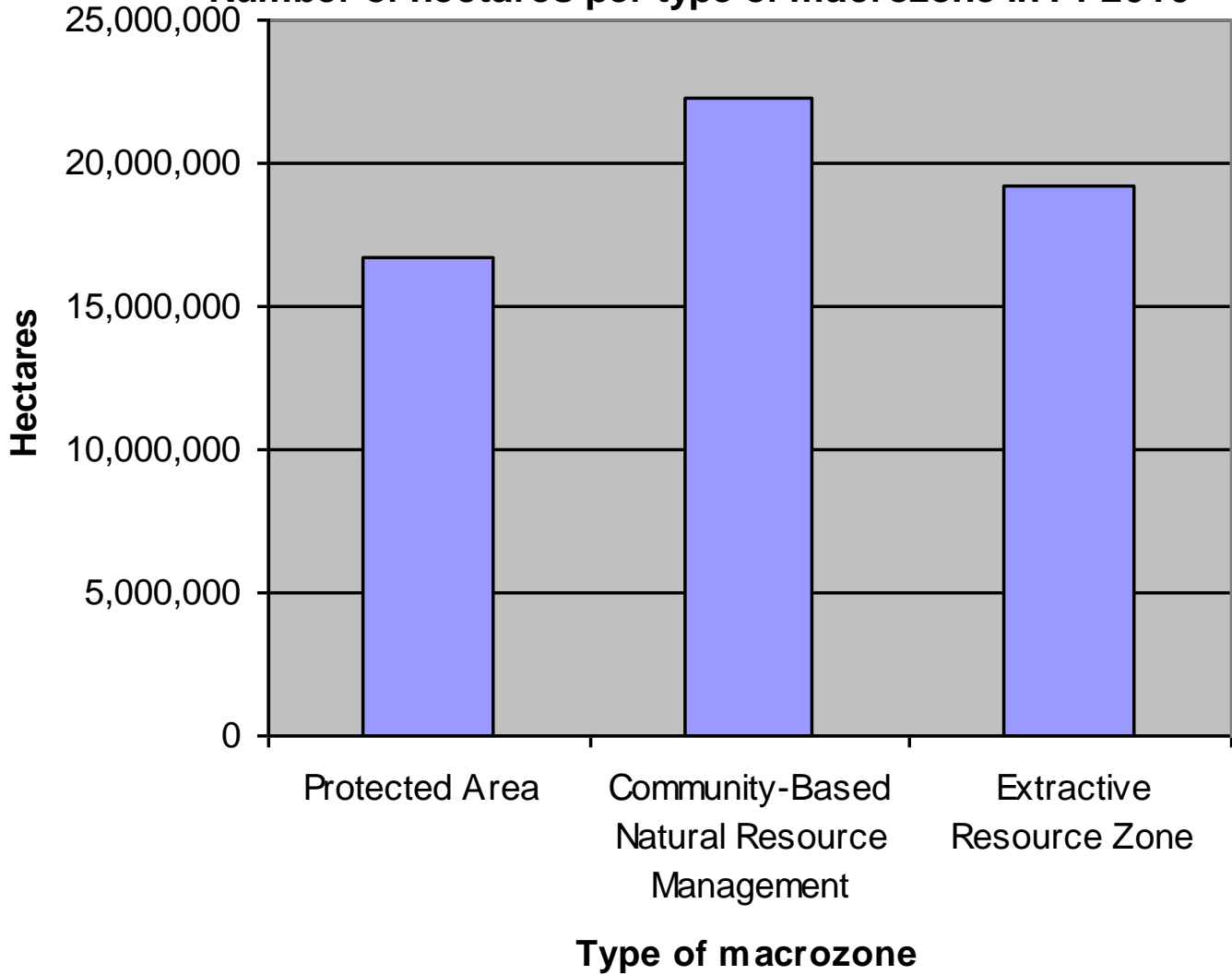
- **Total area for all 12 landscapes**
  - **82,351,995 hectares**
  - **Total area under improved management for all landscapes:**
    - - **2007: 49,040,835 hectares**
    - - **2010: 58,131,882 hectares**

# Macrozone number and area in FY 2010

Macro zone type	No. of MZ	No. of Ha
All	143	58,137,882
Protected Area (PA)	34	16,703,234
Community-Based Natural Resources Management (CBNRM)	66	22,217,567
Extractive Resource Zone (ERZ)	43	19,311,081



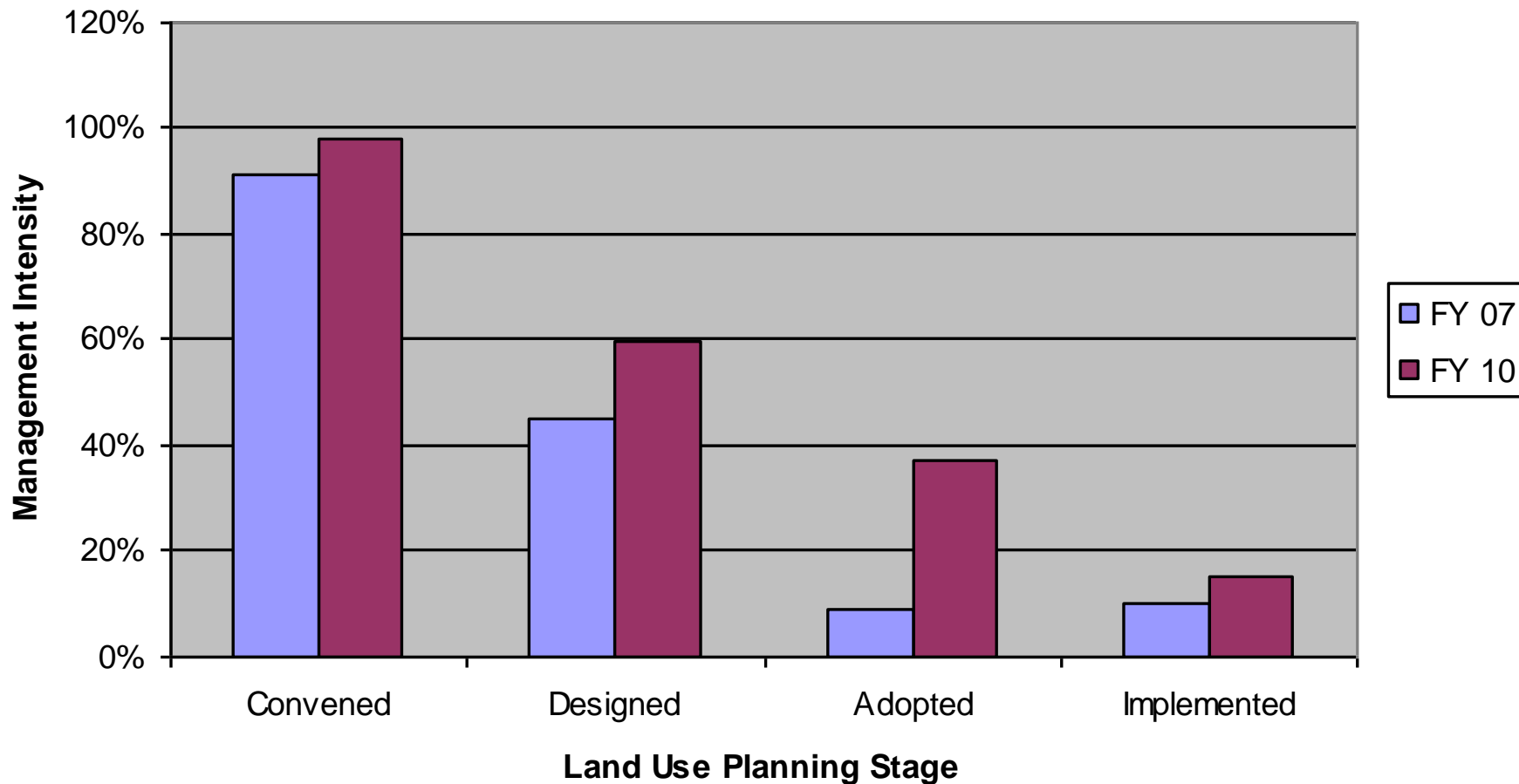
**Number of hectares per type of macrozone in FY 2010**



# Management Intensity of macrozone aggregate

Stage	2007	2010
Convened	91%	98%
Designed	45%	60%
Adopted	9%	37%
Implemented	10%	15%

## Management intensity in FY 2007 and 2010 by stage





## **Result 3**

### **Natural Resources Monitoring Institutionalized**

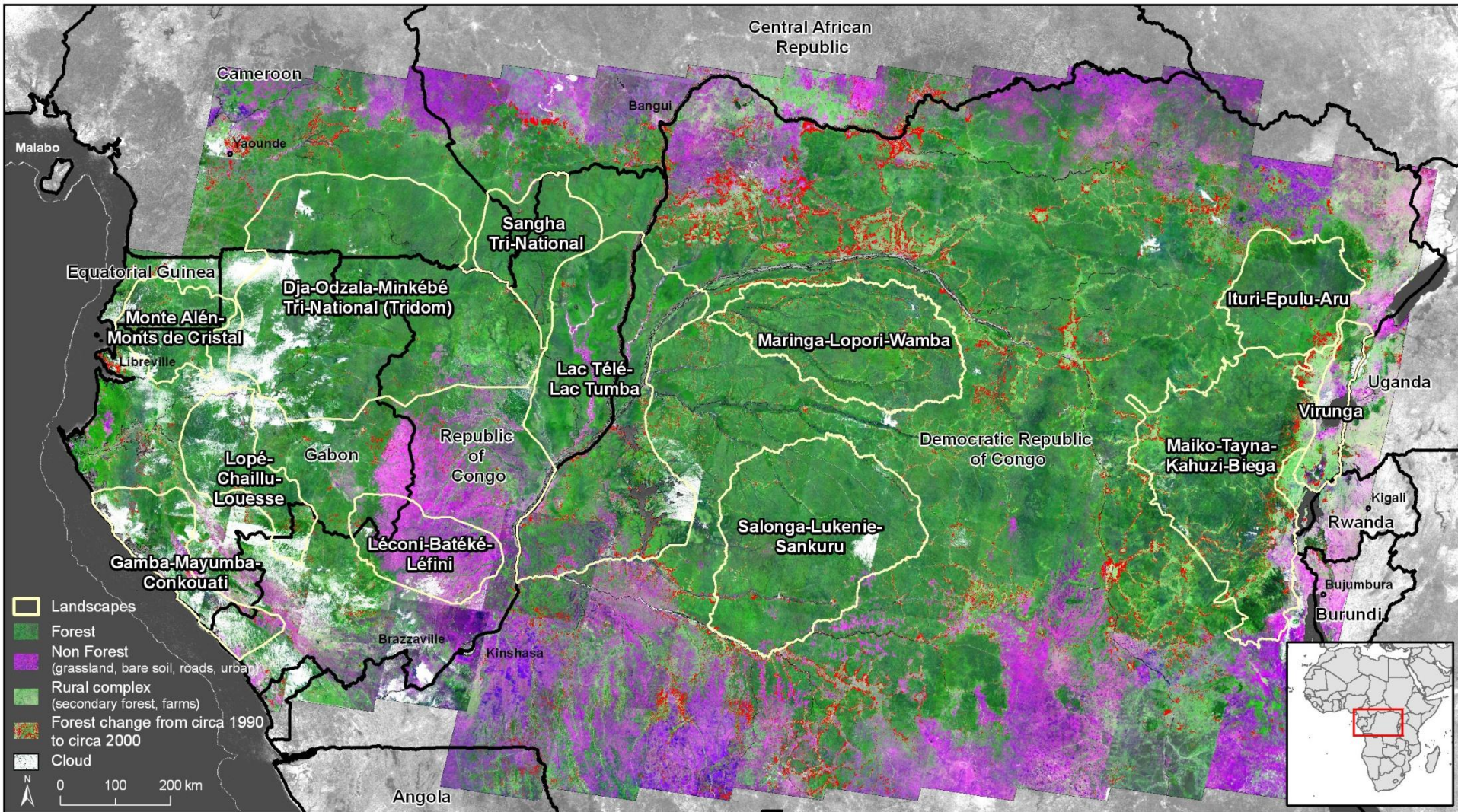
**Ind 1: Number of landscapes or other focal areas with forest cover assessments**

**Ind 2: Congo Basin (African) institutions (e.g. government agencies, universities and research institutions, NGOs, regional institutions) collect and use information for decision-making**

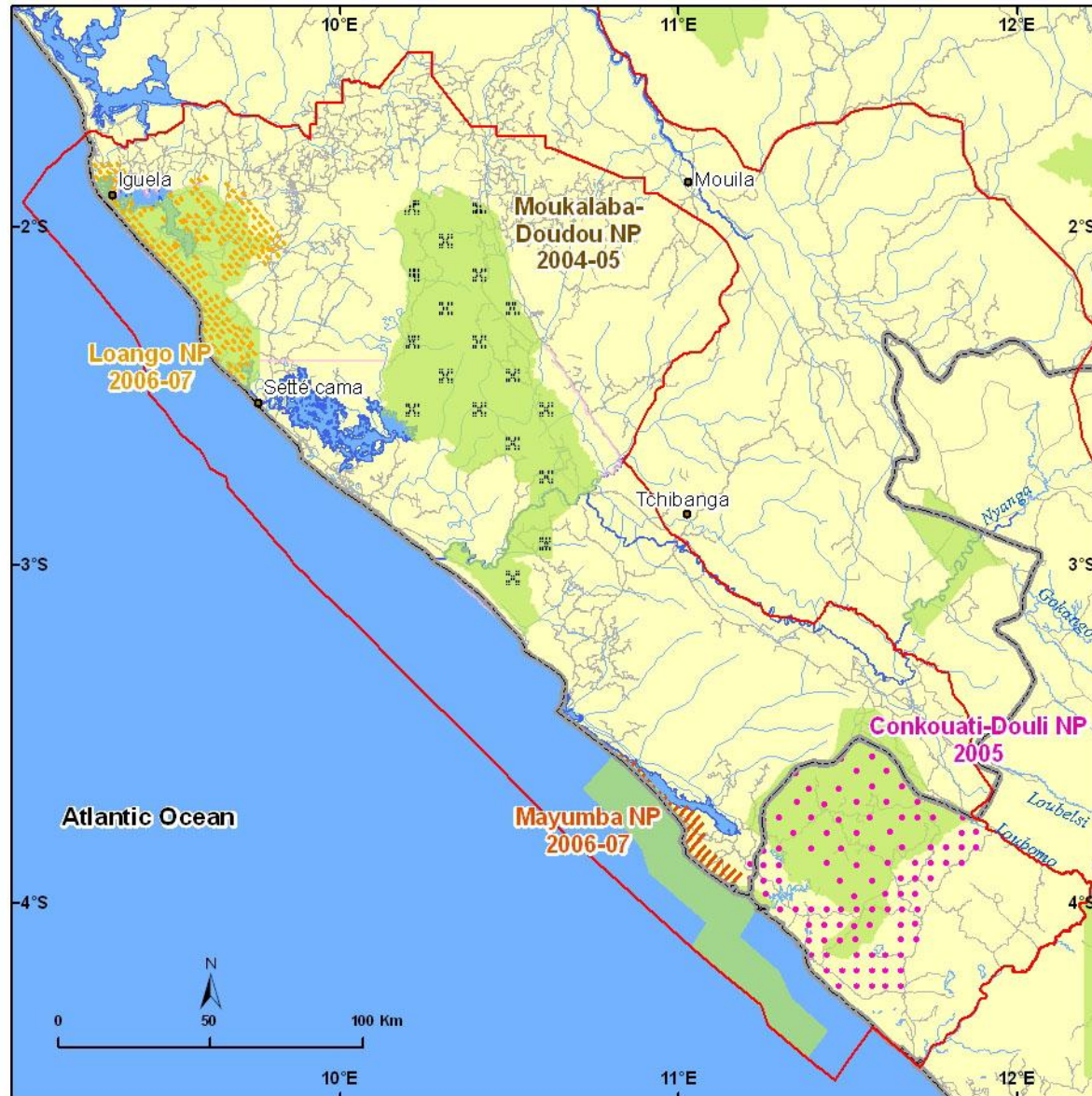
**Ind 3: Content/quality analysis of annual “State of the Congo Basin Forest” report**



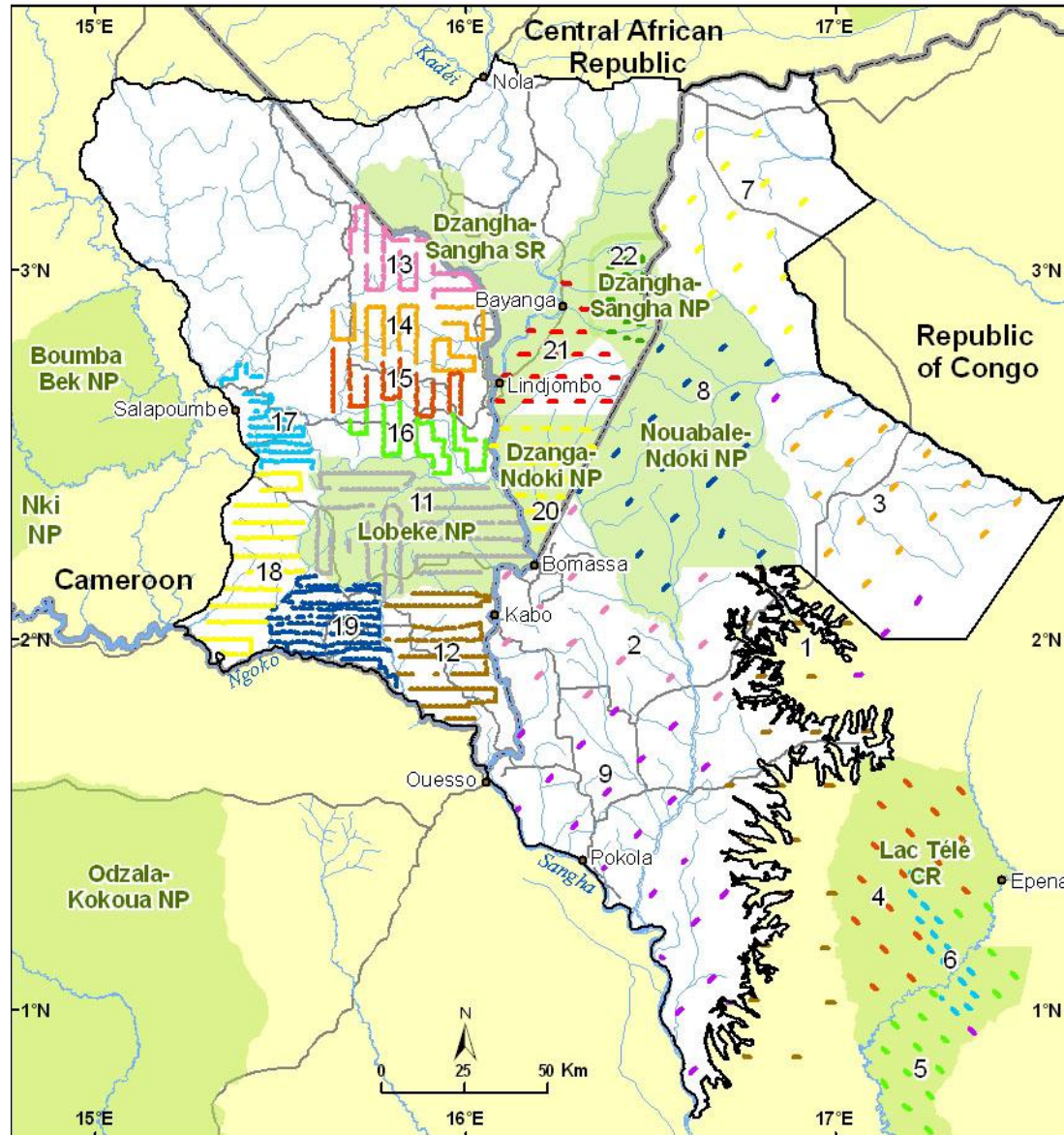
# Forest cover change for the Congo Basin from 1990 to 2010



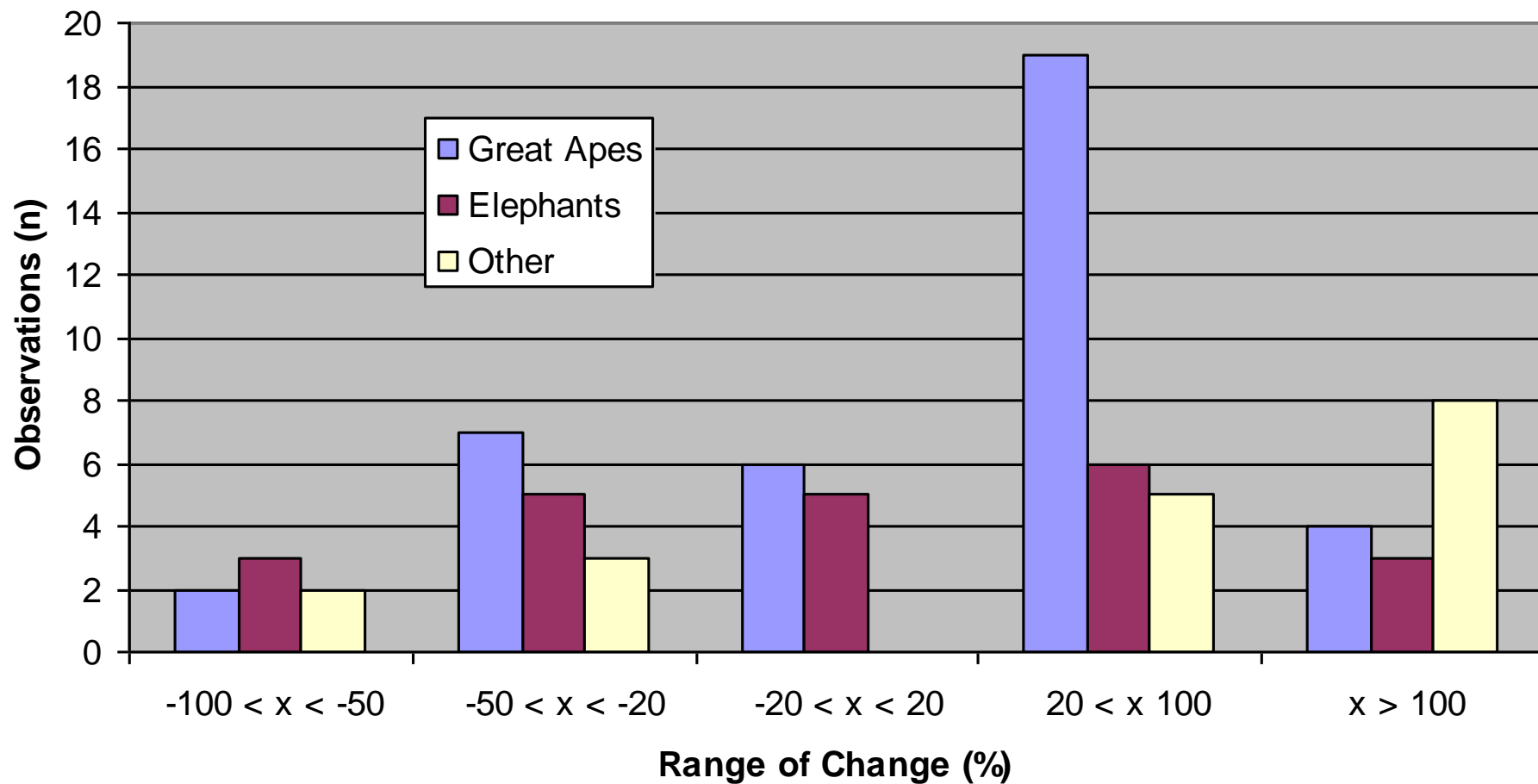
# Location of biological surveys for Gamba-Mayumba-Conkouati Landscape from 2004 - 2007



# Location of biological surveys for Sangha Tri National Landscape for 2002 - 2007



## Changes in Wildlife Populations in CARPE/CBFP Landscapes





## Result 2

Natural resources governance  
(institutions, policies, laws) strengthened  
**COUNTRY-SPECIFIC**

**Ind 1: Number of key new laws or policies for PAs, logging concessions, and CBNRM passed or old laws and policies reformed**

**Ind 2: Number of NGO (and other civil society organizations) advocacy initiatives & activities (e.g., media articles about environmental governance issues e.g. illegal logging, bushmeat poaching)**

# Strengthened Natural Resource Governance

Indicators	Status of Data Quality Assessment	Performance		
		FY 2009 Target	FY 2009 Result	FY 2010 Target
Number of key new laws or policies passed or old laws and policies reformed	Complete  December 23,09	8 *	22	6
Number of NGO (and other civil society organizations) advocacy initiatives & activities	Complete  December 23,09	Several	24	Several
Number NR court cases brought or complaints filed with appropriate government agencies	Complete  December 23,09	Several	15	Several
Assessment of capacity of Congo Basin (African) institutions to collect and analyze information	Complete  December 23,09	Several	235	Several

# Key Achievements 2003-2010

- 58 million hectares of critical forest landscape under improved management
- “Wall to Wall” Forest change mapping from satellites completed
- Dozens of forest communities are managing wildlife and forest habitat for sustainable use
- Congo Basin Forest Partnership members vastly increased funding for Central Africa biodiversity/forest conservation
- Forest management and Wildlife codes have been modernized in most Central African countries
- Over 30,000 people have been trained in conservation methods
- Two Editions of the State of Forest report published
- CARPE “Conservations Lessons Learned” Published

# Future Plans

- Phase III 2011-2017
- Build on Achievements
- Focus on Climate Change Mitigation
- Build REDD Programs on Deforestation Mapping and Landscape Zoning
- Benefit Sharing with Local Communities
- Build Sustainable Financing Systems
- Continue Strengthening Human and Institutional Capacity